



OCCC Facilities and Public Safety Deferred Maintenance and Updates

November 2022

Presented by

Robin Gintner - VP of Administrative
Services

Chris Rogers - Director of Facilities &
Safety



PRESENTATION OVERVIEW

- Update on deferred maintenance projects in 21/22
- Upcoming DM work
- General facilities updates
- Public Safety updates



Central Campus – 77,677 sq ft,
constructed 2009 – 13 years old

Aquarium Science Building – 9,274 sq ft,
constructed 2011 – 11 years old

North County Center – 25,025 sq ft,
constructed 2008 – 14 years old

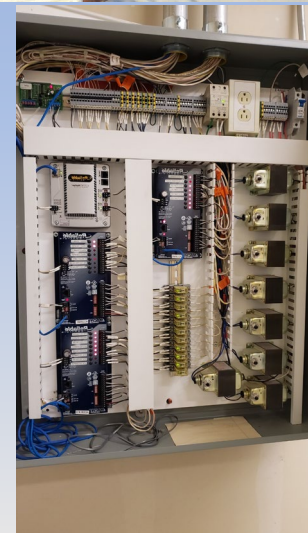
South County Center – 4,200 sq ft,
constructed 2009 – 13 years old

Total Square Footage = 116,176



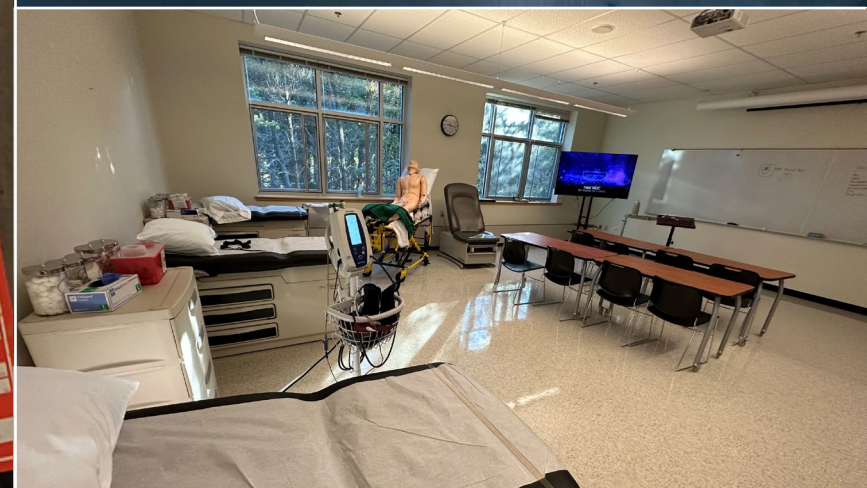
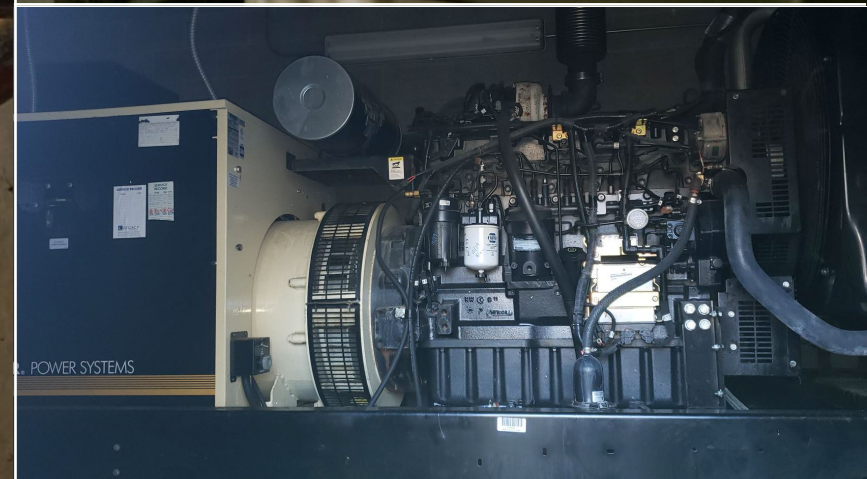
Major Equipment Systems

Boilers, Air Handlers, Generators, Computer Room Air Conditioners (CRAC), Fire Suppression, Life Support Systems for AQS, Elevators, Building Controls, Phone System, Access Control, Fork-Lift and Scissor-Lift



Spring and Summer 2022 DM and Projects

- Major generator repairs at North and Central
- Painted all Central classrooms
- Replaced all DVR's in all buildings
- Yearly boiler preventative maintenance
- North EMT classroom remodel





Grounds Rehab



Boiler System - North Campus Boilers

Main Page North Campus Boilers

1013PRGS Boiler System - Control-BASIC

Program Name	Run	Auto/Man	Timer	Time	Left	Size	Ext	Label
1 Boiler S/S PRG	Yes	Auto	Enabled			48	No	
2 Pump S/S PRG	Yes	Auto	Enabled			456	No	
3 Pump Lead/Lag PRG	No	Auto	Enabled	01:00	00:54	128	No	
4 Heating Flag PRG	Yes	Auto	Enabled			108	No	
5 Hot Water Reset	Yes	Auto	Enabled			76	No	
6 110 FTR Vlv PRG	Yes	Auto	Enabled			44	No	
7 Valves Open PRG	No	Auto	Enabled			0	No	
8	No	Auto	Enabled			0	No	

Mode [F10] Print Abort Close

```

1013PRG2 Boiler System - Pump S/S PRG
9 REM ***** Boiler Start / Stop Program *****
10 IF Pump-Fail-Flag THEN GOTO 101
11 IF Call-For-Heat-Flag AND Outside-Air-Temp < Pump-OAT-Lockout THEN GOTO 30
12
13
14
15 STOP Circ-Pump-1-S/S
16 STOP Circ-Pump-2-S/S
17 END
20 REM ***** Check For Lead Boiler *****
30 IF CP-2-Lead THEN GOTO 80
40
41
42
43
44
45
46
47
48
49
50 START Circ-Pump-1-S/S
51 STOP Circ-Pump-2-S/S
60 GOTO 100
70
71
72
73
74
75
76
77
78
79
80 START Circ-Pump-2-S/S
81 STOP Circ-Pump-1-S/S
90
91
92
93
94
95
96
97
98
99
100 WAIT 0:00:05
101 IF Circ-Pump-1-Status <> Circ-Pump-1-S/S THEN GOTO 120
102 IF Circ-Pump-2-Status <> Circ-Pump-2-S/S THEN GOTO 120
104 END
120 START Pump-Fail-Flag
121 WAIT 0:00:01
130 IF CP-1-Lead THEN GOTO 290
140 IF CP-2-Lead THEN GOTO 350
150
160 STOP Circ-Pump-1-S/S
170
180 END
210 STOP Circ-Pump-2-S/S
230 END
240 REM ***** Start Lag Boiler *****

```

Send Load Print Files Local/ers Mneemonic

Panel Status

Device #1002 1st Flr FTR Valve - 1A2.pan Loading Control-BASIC PRG

Panel Name	File
X Device #1004 1st Flr FTR Valve	1A4.pan
X Device #1004 1st Flr FTR Valve	1A4.pan
X Device #3013 TU1-103 Rm 49	3A13.pan
X Device #3030 TU3-102 Rm 53	3A30.pan
X Device #3047 TU11-201 Rm241/238	3A47.pan
X Device #3098 TU-01 Rm 79	3A98.pan
X Device #5002 RH-1,2,3,4,5,6,7,8	5A2.pan
X Device #2010 EFB-101/EPB-104	2A10.pan
X Device #2027 TU8-103 Rm 154	2A27.pan
X Device #1007 AC-2-1 Control	1A7.pan
X Device #1007 AC-2-1 Control	1A7.pan
X Device #1007 AC-2-1 Control	1A7.pan
X Device #1007 AC-2-1 Control	1A7.pan
X Device #3016 TU1-202 Rm 262	3A16.pan
X Device #1007 AC-2-1 Control	1A7.pan
X Device #3033 FTU3-101 Rm 32	3A33.pan
X Device #5005 WFWT	5A5.pan
X Device #4002 EDH 1,2,3,4,5,6	4A2.pan
X Device #2013 CP4 Rm157R/Hws	2A13.pan
X Device #2030 TU8-106 Rm 152	2A30.pan
X Device #1010 1st Flr FTR Valve	1A10.pan
X Device #1010 1st Flr FTR Valve	1A10.pan
X Device #1010 1st Flr FTR Valve	1A10.pan
X Device #1010 1st Flr FTR Valve	1A10.pan
X Device #1010 1st Flr FTR Valve	1A10.pan
X Device #1010 1st Flr FTR Valve	1A10.pan
X Device #3002 AHU-2 Controls	3A2.pan
X Device #3019 TU1-205 Rm 268	3A19.pan
X Device #3036 TU3-203 Rm 248	3A36.pan
X Device #3053 FTU11-201 Rm 245	3A53.pan
X Device #5008 EFFLUENT	5A8.pan
X Device #2016 TU6-103 Rm 120	2A16.pan
X Device #2033 TU9-102 Rm 142	2A33.pan
X Device #1013 Boiler System	1A13.pan
X Device #1013 Boiler System	1A13.pan
X Device #1013 Boiler System	1A13.pan
X Device #1013 Boiler System	1A13.pan
X Device #3005 AHU-5 Controls	3A5.pan
X Device #2022 TU2-103 Rm 72	2A22.pan
X Device #3039 TU4-101 Rm 20	3A39.pan
X Device #1033 TU4-108 Rm 28	3A46.pan
X Device #5011 Dom Hot Water	5A11.pan
X Device #2019 TU6-106 Rm 101	2A19.pan
X Device #2036 TU9-105 Rm 132	2A36.pan
X Device #3008 FTR's Rm 05/19	3A8.pan
X Device #3025 TU2-106 Rm64	3A25.pan
X Device #3042 TU4-104 Rm 26	3A42.pan
X Device #2005 AHU-10 2nd Flr Ctr	2A5.pan
X Device #2022 TU7-101 Rm 174	2A22.pan
X Device #2039 TU10-203 Rm 204	2A39.pan
X Device #1002 1st Flr FTR Valve	1A2.pan

Upcoming DM work and Projects

- Building controls overhaul
- Strip and wax all tile floors
- On-going roof and gutter work
- Continue planter resets



Long Term Projects and Estimated Cost

FY 22-23 Budget

Preventative Maintenance Contracts - \$60,000

Repairs & Maintenance Allocation - \$61,000

Deferred Maintenance Projects for the Future

2023-24 - \$67,750 (AQS Lighting swap
\$25,000)

2024 - \$225,750 (Painting building exteriors
\$215,250)

2025 - \$215,000 (NC generator \$50,000, CC
parking lot lights \$80,000, CC Commons carpet
replacement \$70,000)



Clery Act

What is it

- In 1986, Jeanne Clery was sexually assaulted and murdered in her dorm at Lehigh University
- Her family fought for the Clery Act (The Jeanne Clery Disclosure of Campus Security Policy and Campus Crime Statistics Act). It was passed in 1990
- It requires higher ed institutions to disclose information about crimes committed on campuses so students, family and employees can make informed decisions and feel safe



The Great Oregon Shake Out



Questions?

- Robin.Gintner@oregoncoast.edu
- 541-867-8516

- Chris.Rogers@oregoncoast.edu
- 541-867-8549