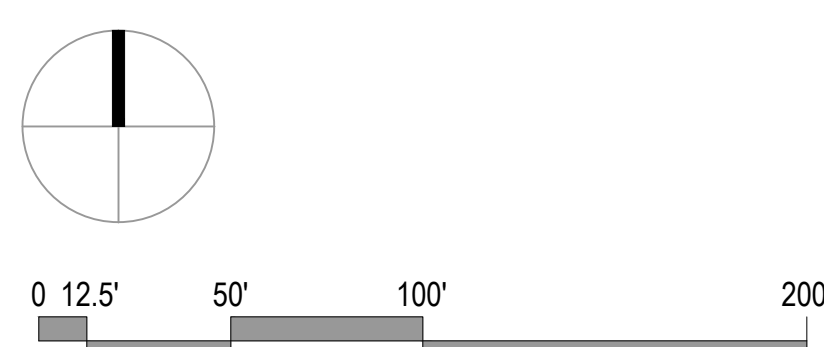


G€€ÎÁU↔\æÁBÁÑ | ↔→ä↔^&Á
Nääæ^ä | ↑Á\~Á\åæÁRáb\æãÁ\$→á^

Oregon Coast Community College

OREGON COAST
COMMUNITY COLLEGE



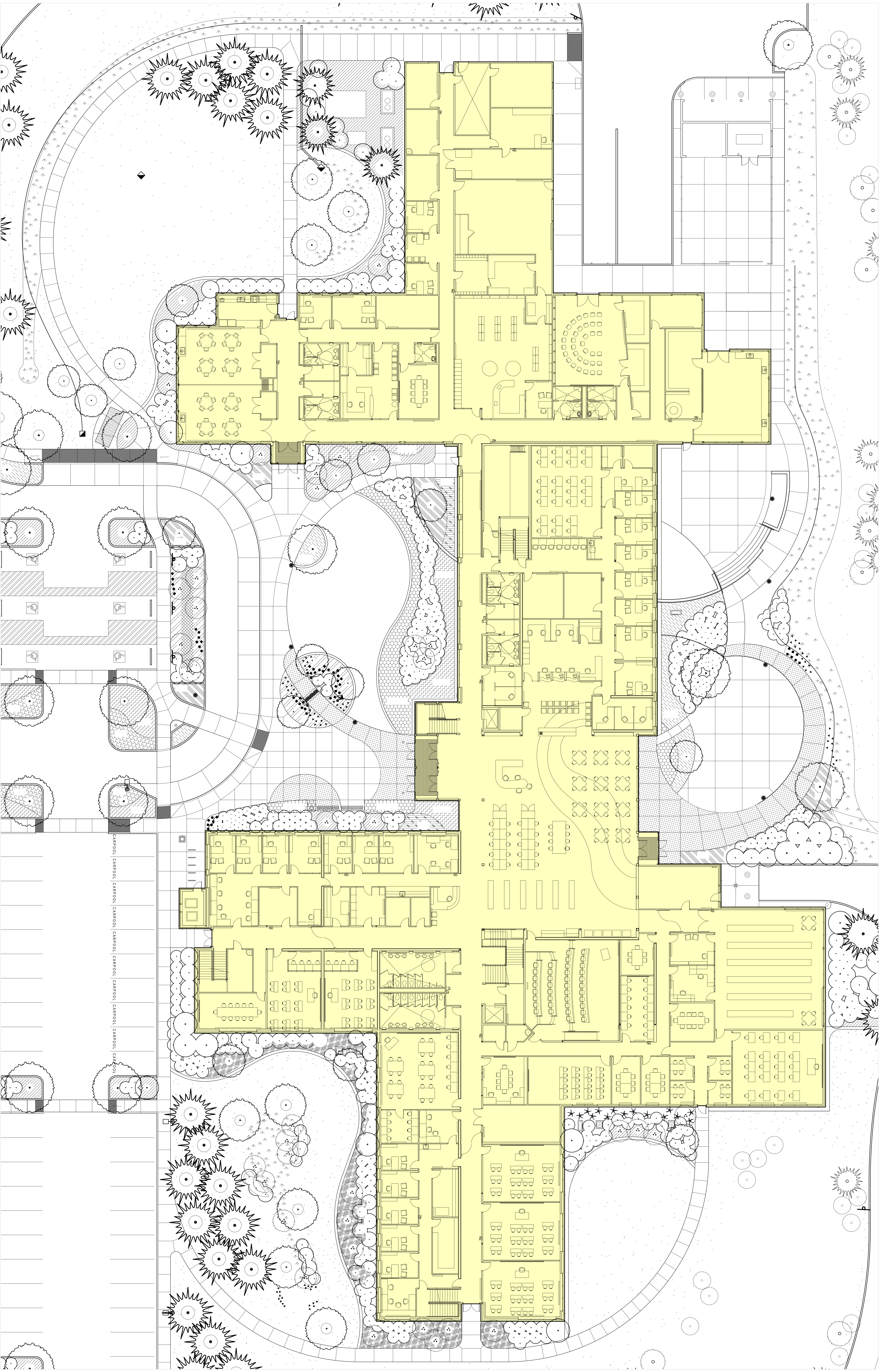


CENTRAL CAMPUS MASTER SITE PLAN

OREGON COAST COMMUNITY COLLEGE

MARCH 24, 2016

gLas
Architects, LLC

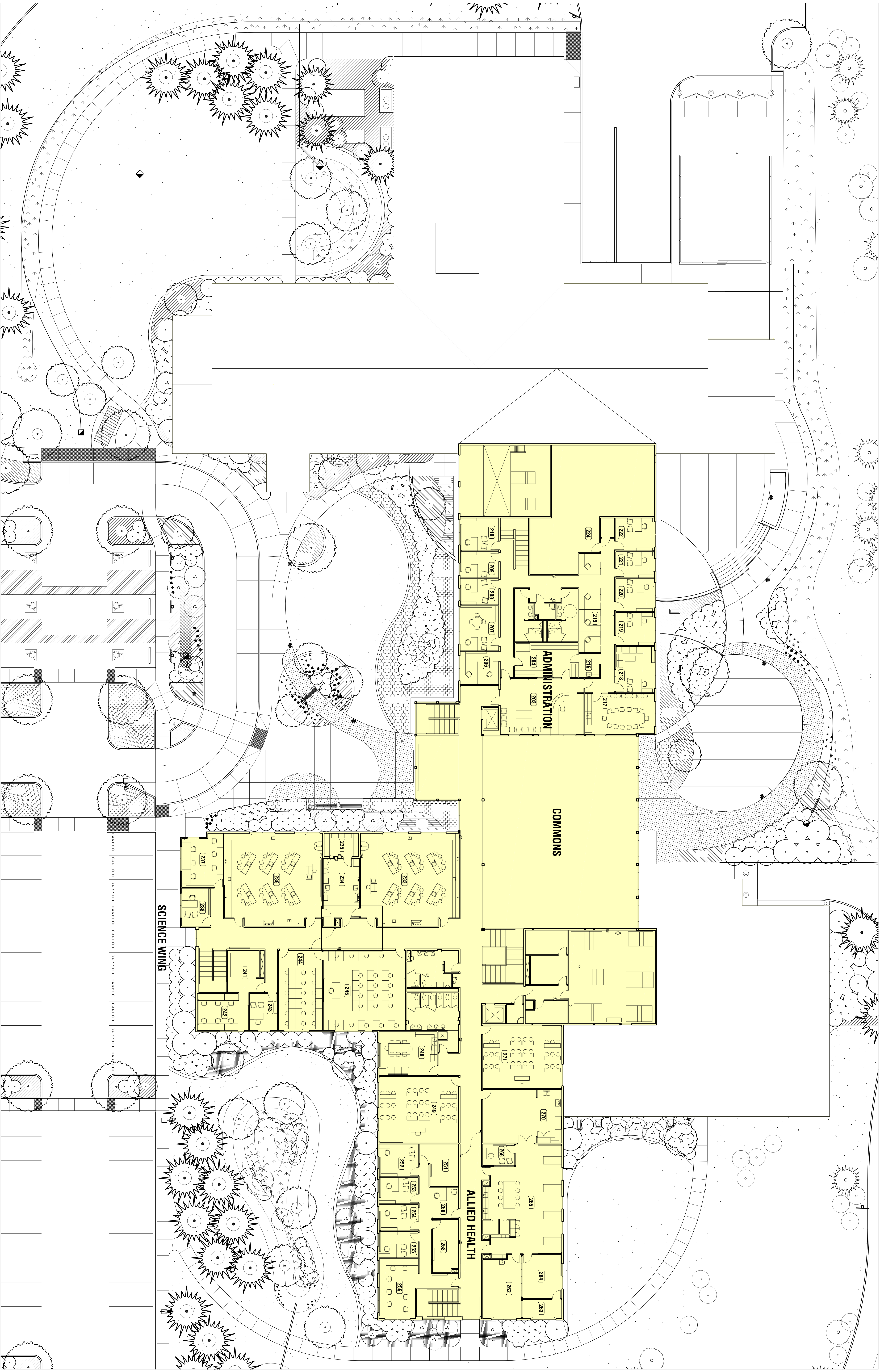


OREGON COAST COMMUNITY COLLEGE

CENTRAL CAMPUS - GROUND FLOOR

AUGUST 21, 2009

glaS
Architects, LLC

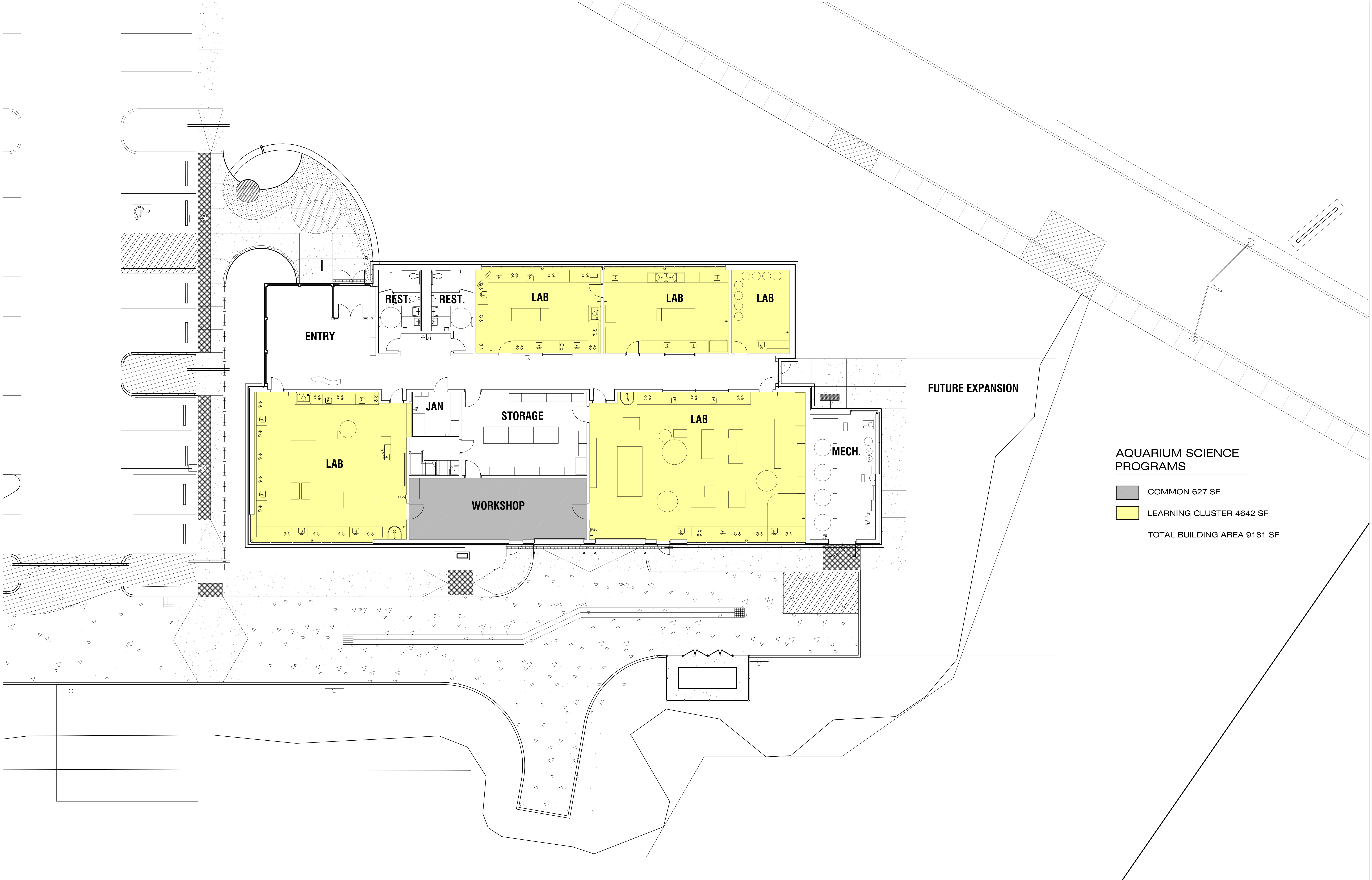


OREGON COAST COMMUNITY COLLEGE

CENTRAL CAMPUS - SECOND FLOOR

AUGUST 21, 2009

glaS
Architects, LLC

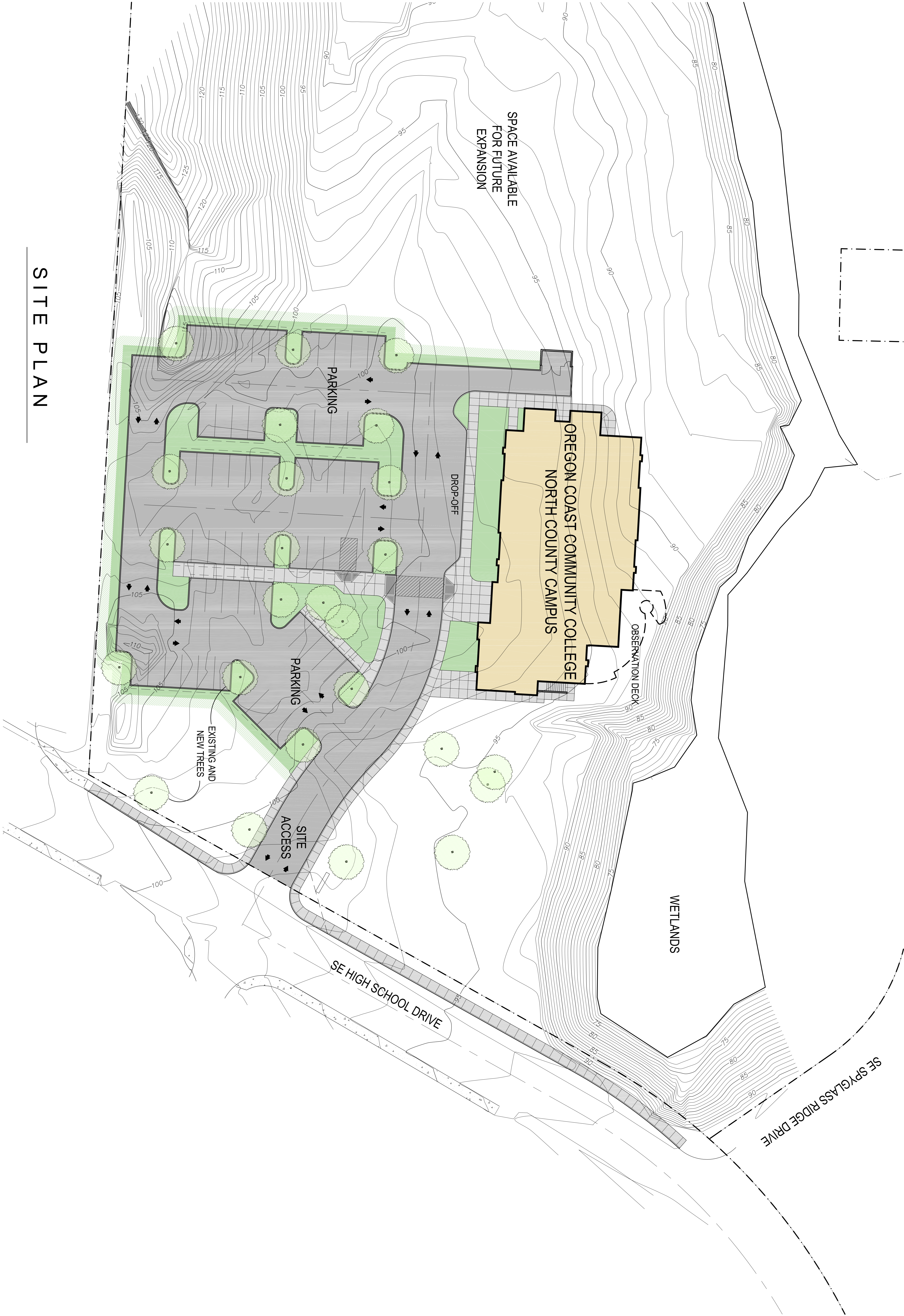
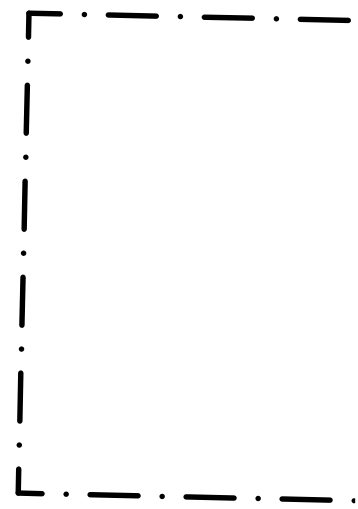


OREGON COAST COMMUNITY COLLEGE

SOUTH CAMPUS

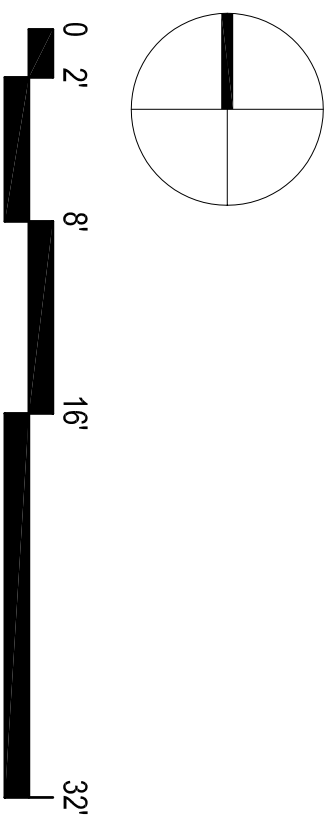
FEBRUARY 5, 2018

gLAs
Architects, LLC



SITE PLAN

OREGON COAST COMMUNITY COLLEGE
NORTH COUNTY CAMPUS



OREGON COAST COMMUNITY COLLEGE

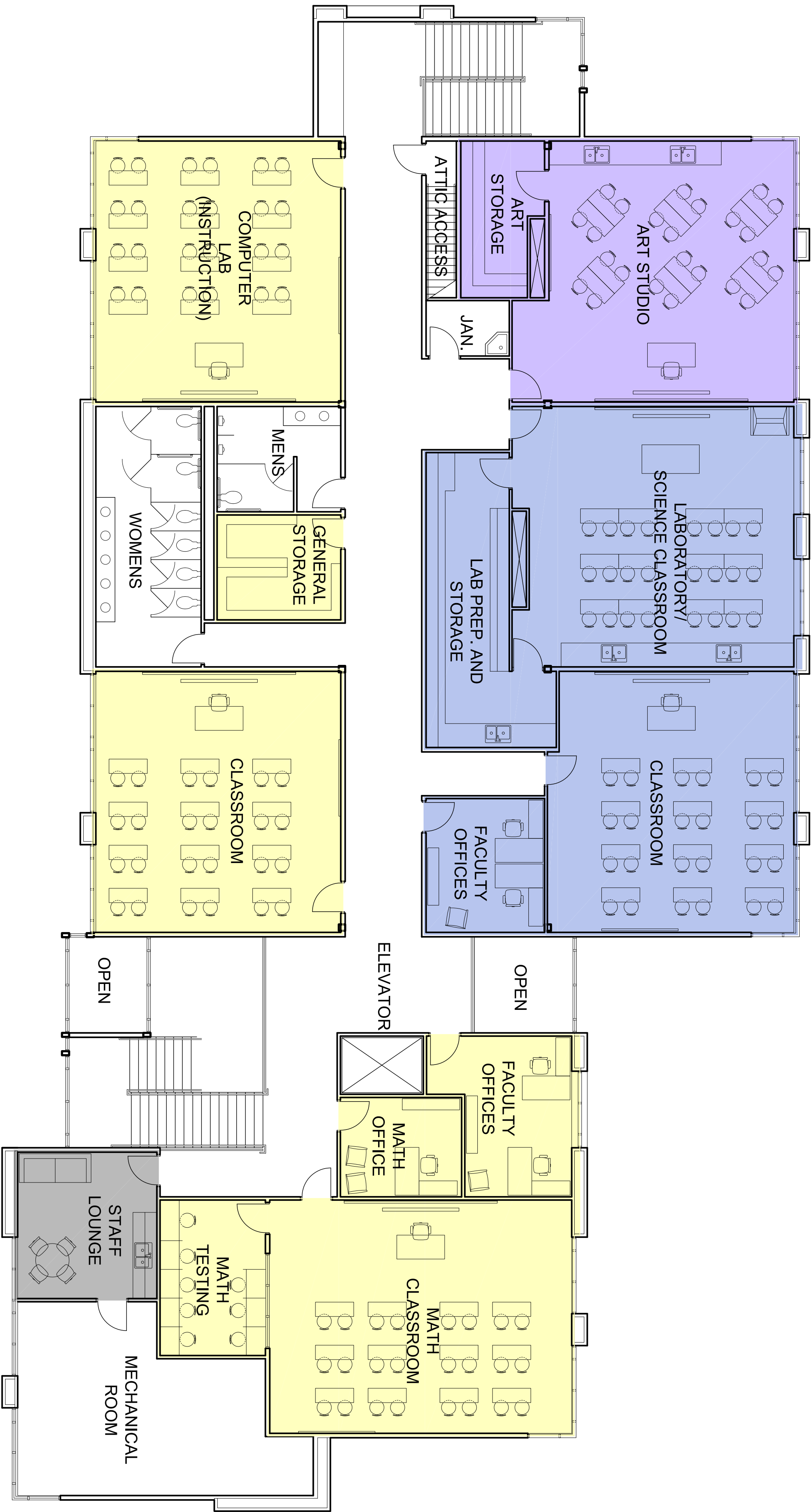
NORTH COUNTY CAMPUS



FIRST FLOOR PLAN

NORTH CAMPUS PROGRAMS

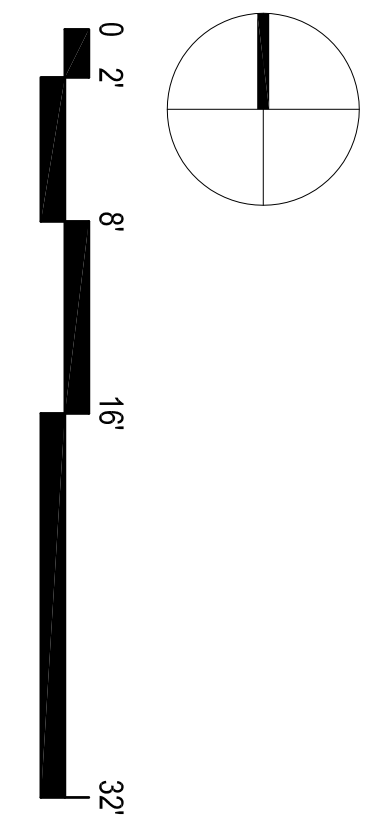
- ADMINISTRATIVE
- SMALL BUSINESS DEVELOPMENT
- BASIC SKILLS
- PRE-ALLIED HEALTH AND SCIENCE
- ART EDUCATION
- LEARNING CLUSTER
- MEDIA CENTER
- SHARED FACILITIES



NORTH CAMPUS
PROGRAMS

- ADMINISTRATIVE
- SMALL BUSINESS DEVELOPMENT
- BASIC SKILLS
- PRE-ALLIED HEALTH AND SCIENCE
- ART EDUCATION
- LEARNING CLUSTER
- MEDIA CENTER
- SHARED FACILITIES

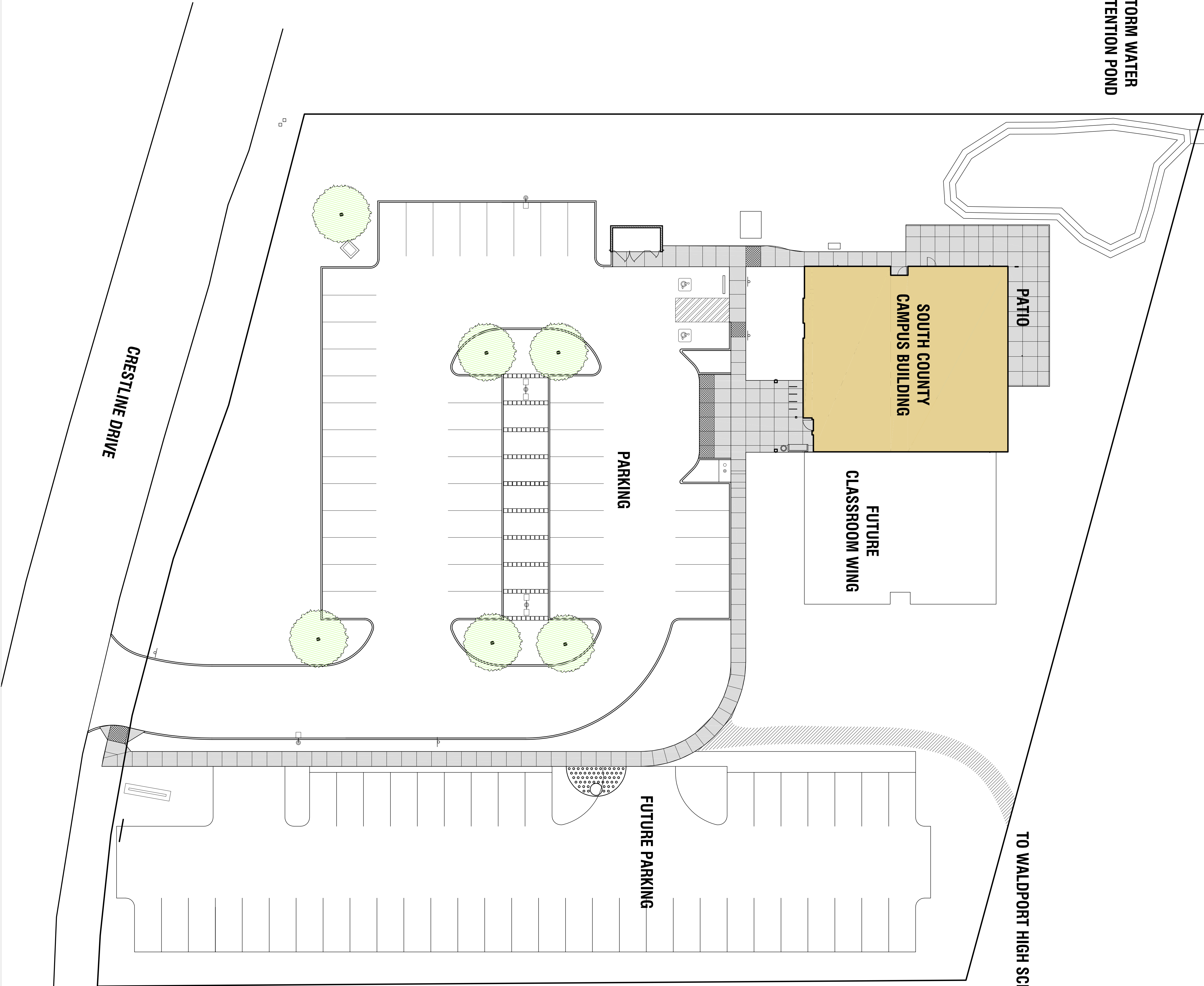
SECOND FLOOR PLAN



OREGON COAST COMMUNITY COLLEGE
NORTH COUNTY CAMPUS

STORM WATER
DETENTION POND

TO WALDPOR T HIGH SCHOOL



CRESTLINE DRIVE

PARKING

FUTURE PARKING

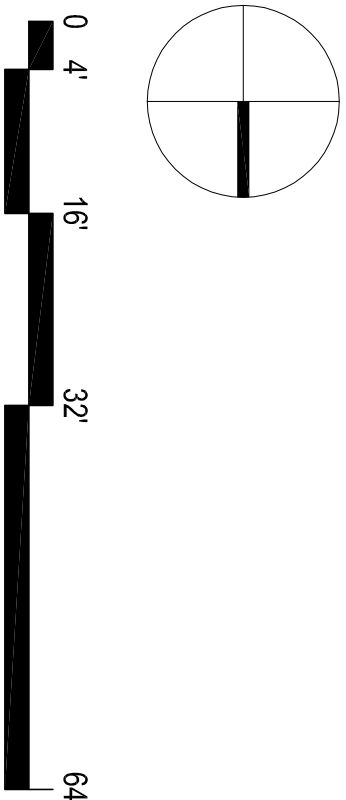
PATIO

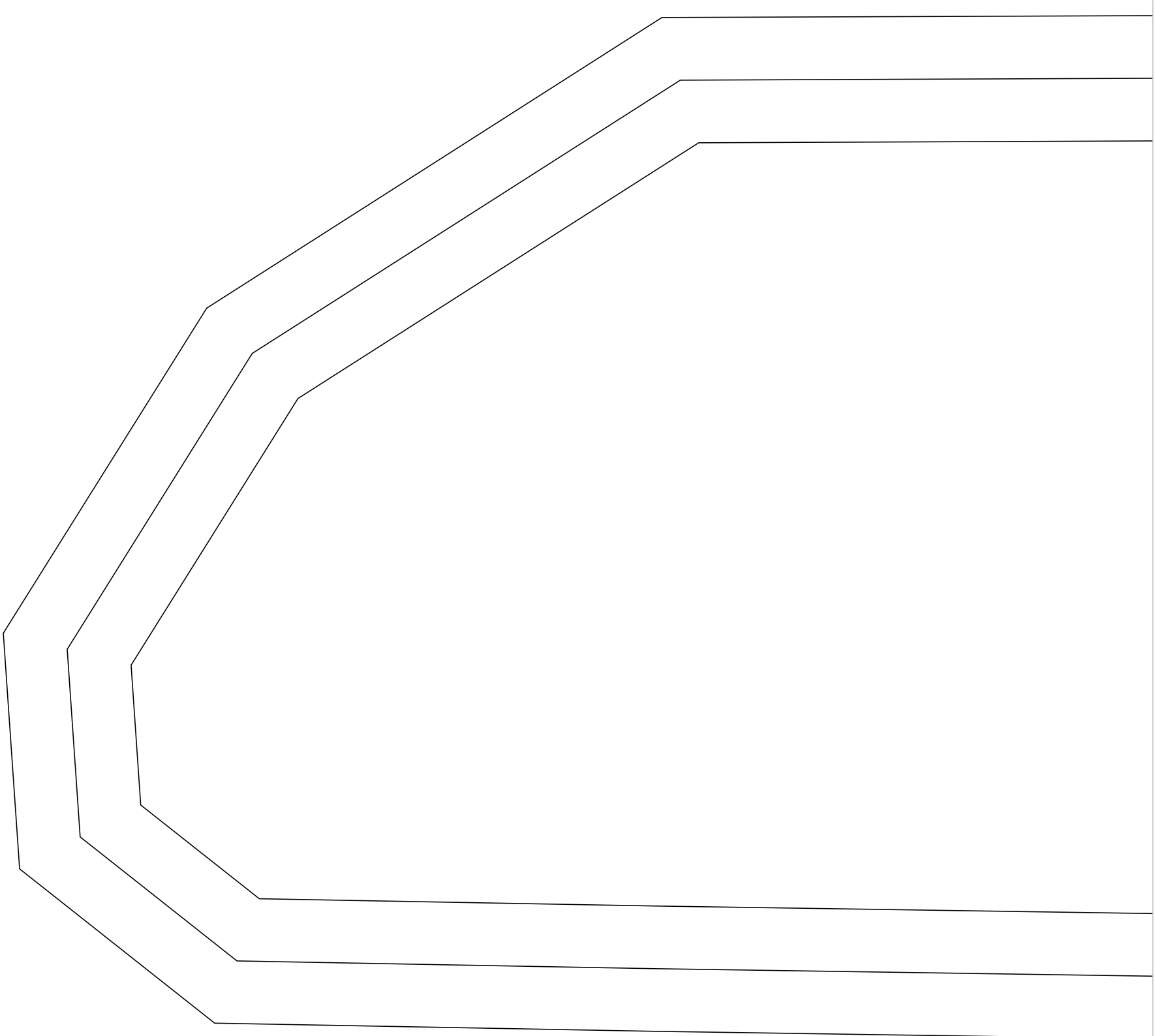
SOUTH COUNTY
CAMPUS BUILDING

FUTURE
CLASSROOM WING

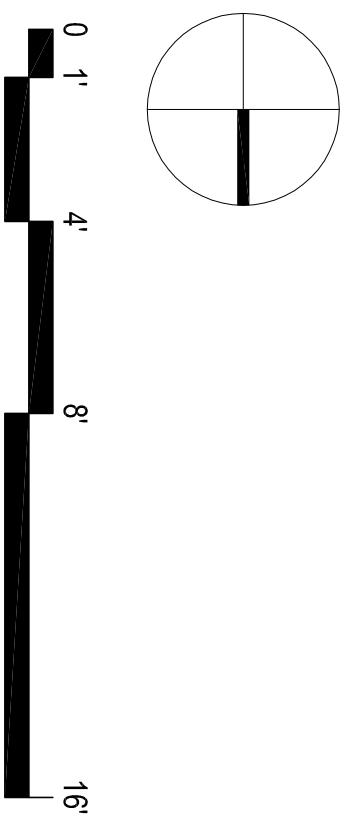
OREGON COAST COMMUNITY COLLEGE

SOUTH CAMPUS





- SOUTH CAMPUS PROGRAMS**
- ADMINISTRATION 525 SF
 - BASIC SKILLS 1436 SF
 - LEARNING CLUSTER 731 SF
- TOTAL BUILDING AREA 4125 SF



OREGON COAST COMMUNITY COLLEGE

SOUTH CAMPUS